

Saipan Population by District 1980 to 2000

July 2001

Table of Contents

Map Figure 1.0 Tinian Population by District: 1980 to 2000	2
Table 1.0 Tinian Population by District: 1980 to 2000	3
Map Figure 2.0 Tinian Population by District: 2000	4
Map Figure 3.0 Tinian Population by District: 1995	5
Map Figure 4.0 Tinian Population by District: 1990	6
Map Figure 5.0 Tinian Population by District: 1980	7

Map Figure 1. 0 Tinian Population by District: 1980 to 2000

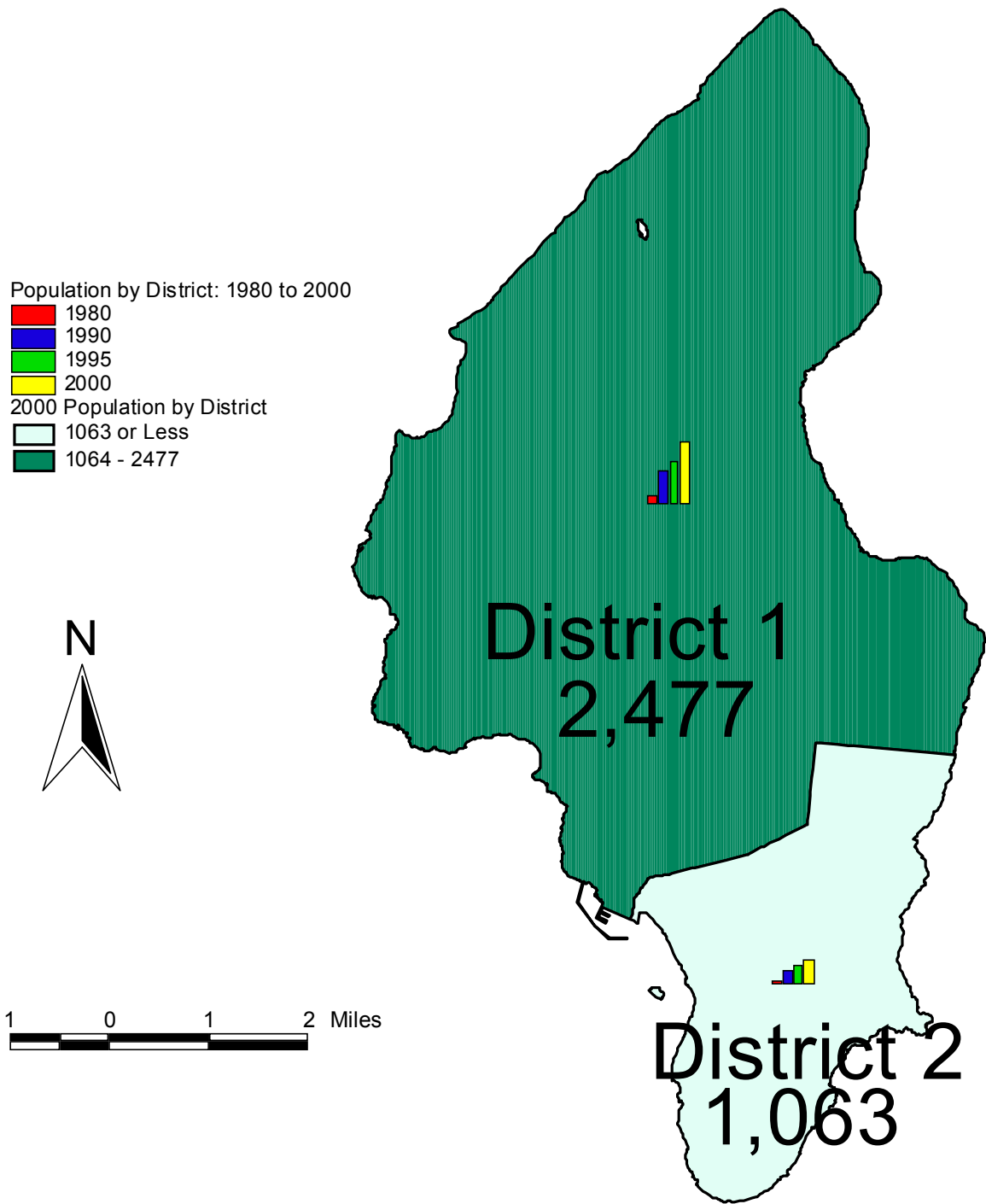
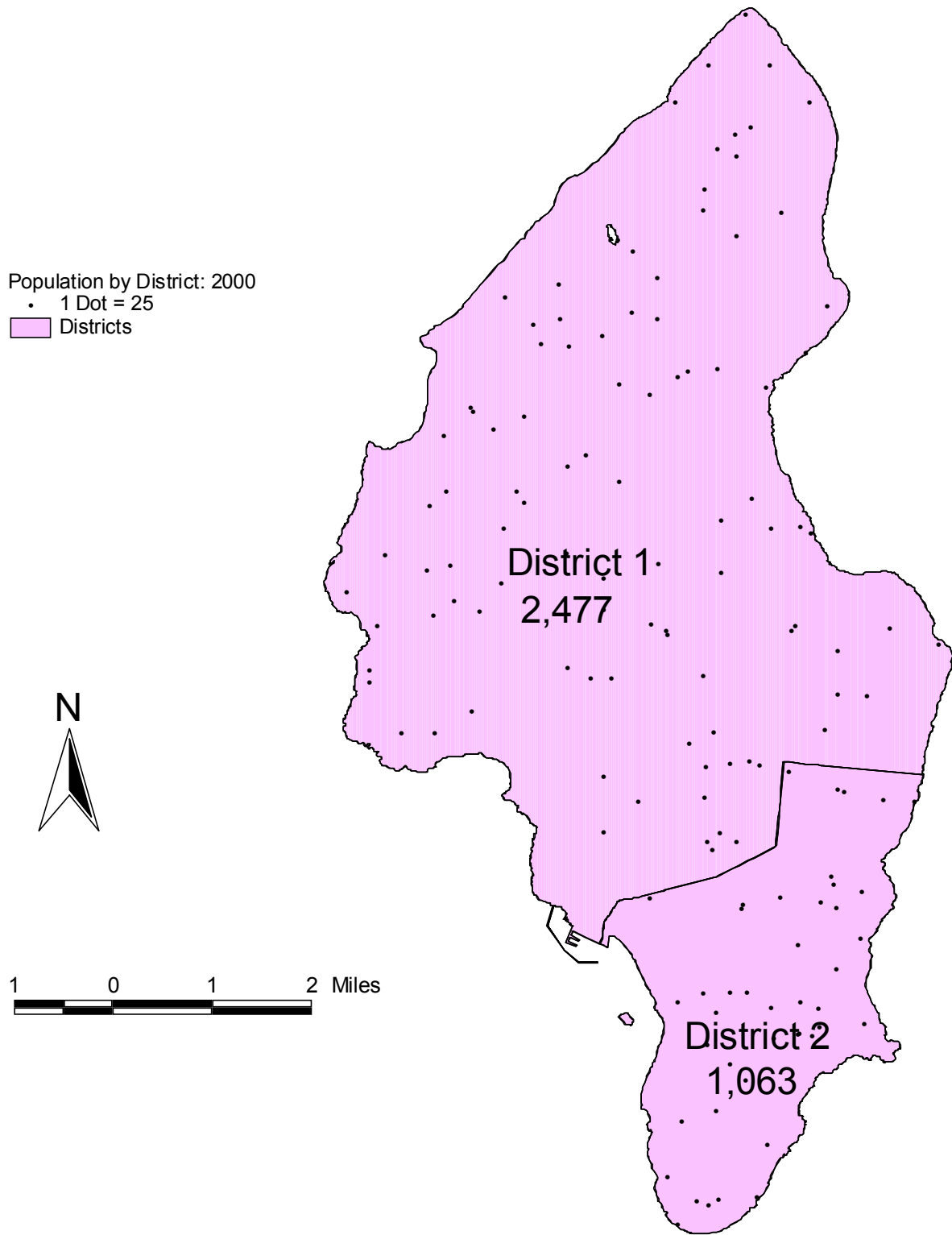


Table 1.0 Tinian Population by District: 1980 to 2000

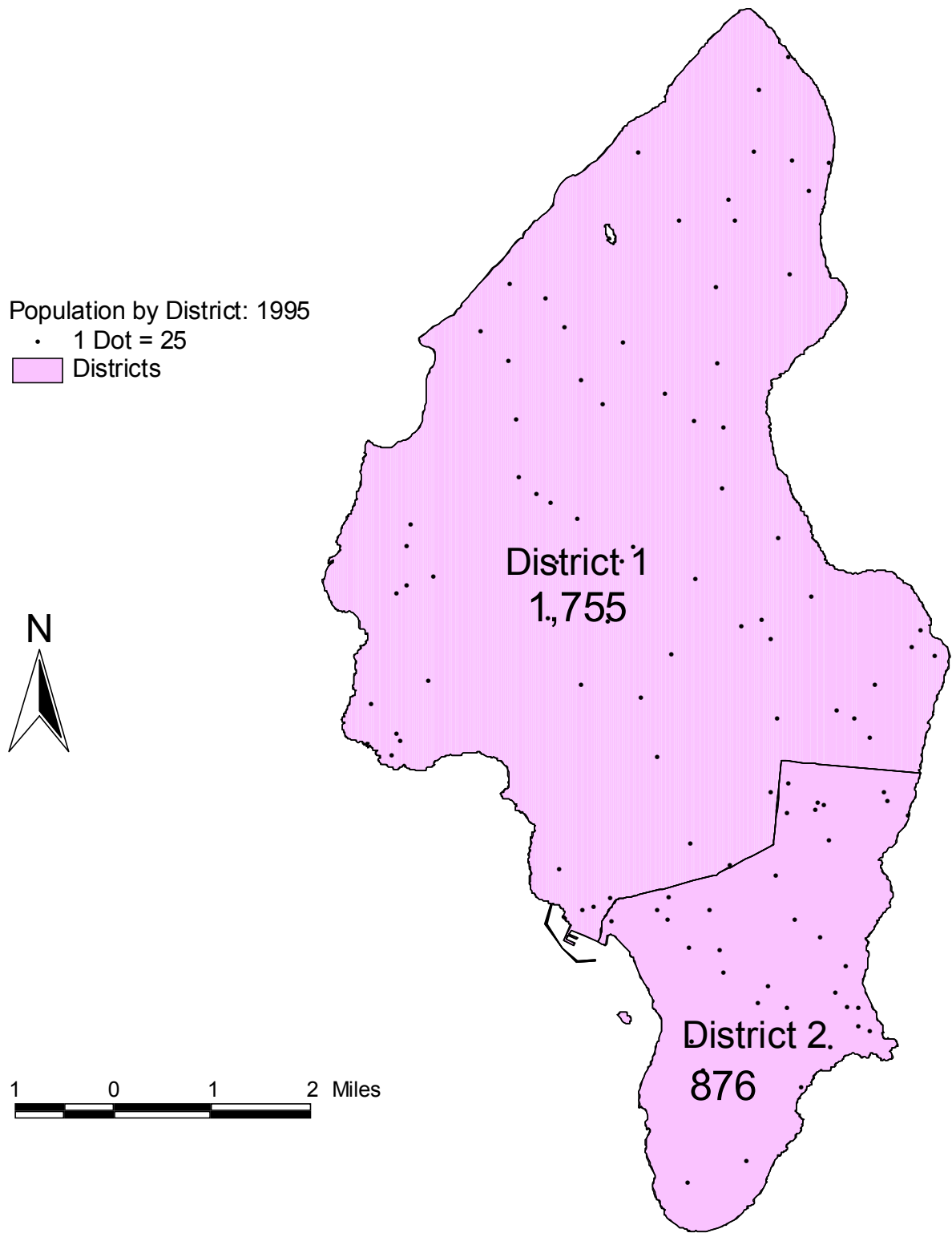
DISTRICT	Population				Change from Prior Census Year					
					Number of person			Percent		
	1980	1990	1995	2000	1995 to 2000	1990 to 2000	1980 to 2000	1995 to 2000	1990 to 2000	1980 to 2000
Tinian Total	765	2,118	2,631	3,540	909	1,422	2,775	34.5	67.1	362.7
District 1	492	1,442	1,755	2,477	722	1,035	1,985	41.1	71.8	403.5
District 2	273	676	876	1,063	187	387	790	21.3	57.2	289.4

Source: 1980 Census, 1990 Census, 1995 Census and 2000 Census of Population and Housing

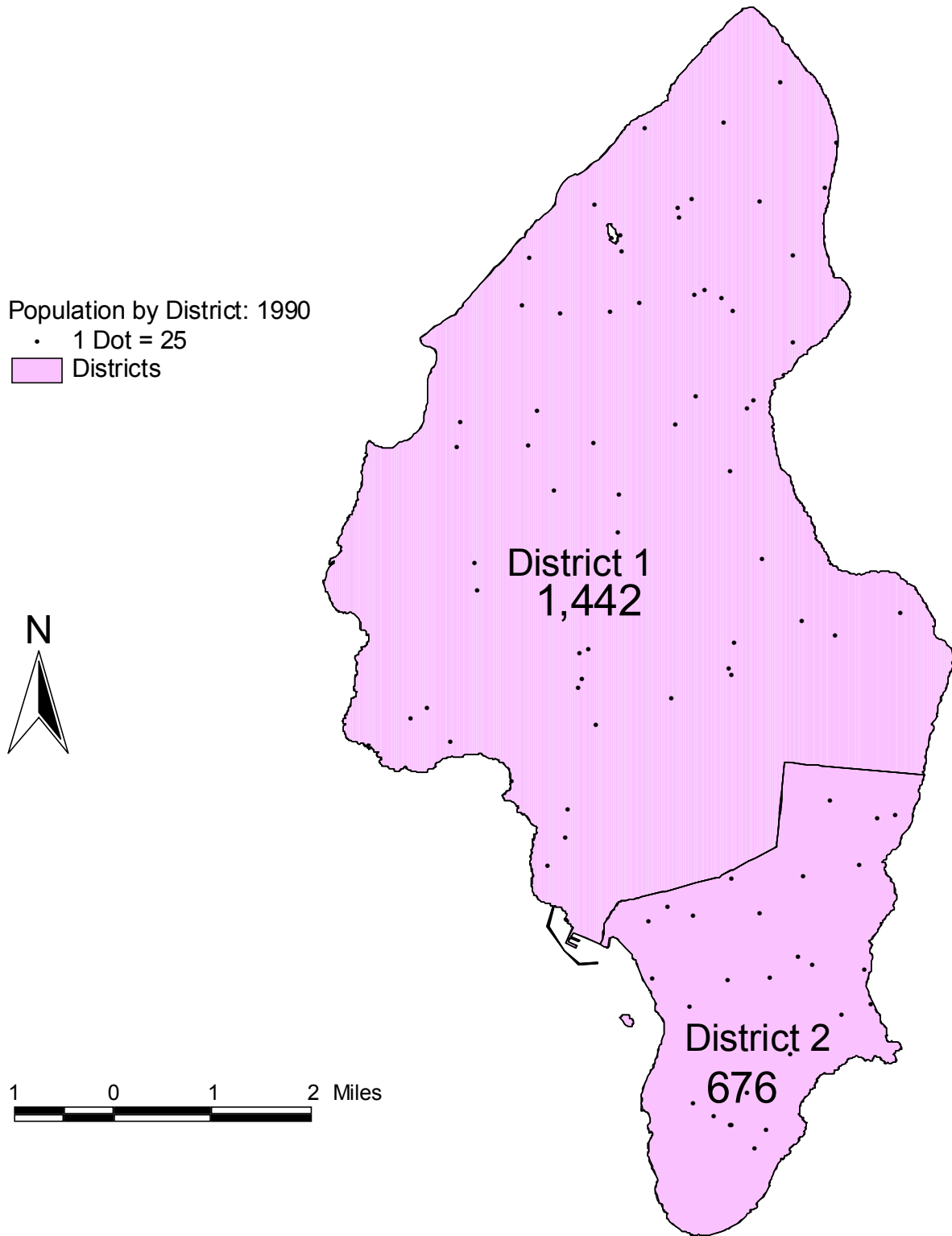
Map Figure 2.0 Tinian Population by District: 2000



Map Figure 3.0 Tinian Population by District: 1995



Map Figure 4.0 Tinian Population by District: 1990



Map Figure 5.0 Tinian Population by District: 1980

