



# ECONOMIC INDICATOR

A QUARTERLY REPORT

JANUARY - MARCH 2009



DEPARTMENT OF COMMERCE  
COMMONWEALTH OF THE NORTHERN MARIANA ISLANDS  
CALLER BOX 10007 CK  
SAIPAN, MP. 96950  
TEL NO: (670) 664 - 3000

## **MESSAGE FROM THE SECRETARY**

We are pleased to present the First Quarter issue of the Economic Indicator, depicting the social and economic conditions of the Commonwealth of the Northern Mariana Islands (CNMI), covering January through March 2009.

This publication is made possible by data researched and tabulated under the Central Statistics Division, Department of Commerce, and with contributions from other CNMI Government departments and agencies, as well as inputs from private organizations.

Other reports published by the Department of Commerce may be accessed at:

**[www.commerce.gov.mp/new](http://www.commerce.gov.mp/new)**

We are committed to providing you, the public, business community, and leaders of the CNMI this quarterly issue for whatever purpose it may serve you. Moreover, we are grateful to all those who contributed to the successful compilation of this report and look forward to working closely together to ensure that future issues are published on time. We invite and welcome any suggestions or comments that may improve our quarterly publications. Please send your thoughts to our office.

Hafa Adai,

MICHAEL J. ADA  
Secretary of Commerce

# Table of Contents

<b>TABLE 1 - BANKING ACTIVITY .....</b>	<b>4</b>
<b>FIGURE 1.1 - BANKING ACTIVITY - DEPOSITS .....</b>	<b>4</b>
<b>FIGURE 1.2 - BANKING ACTIVITY - LOANS .....</b>	<b>4</b>
<b>TABLE 2 - REMITTANCE .....</b>	<b>5</b>
<b>FIGURE 2 - REMITTANCE .....</b>	<b>5</b>
<b>TABLE 3 - AUTO SALES .....</b>	<b>5</b>
<b>FIGURE 3 - AUTO SALES .....</b>	<b>5</b>
<b>TABLE 4 - VISITOR ARRIVAL .....</b>	<b>6</b>
<b>FIGURE 4 - VISITOR ARRIVAL .....</b>	<b>6</b>
<b>TABLE 5 - AVERAGE CNMI HOTEL DAILY RATE .....</b>	<b>7</b>
<b>FIGURE 5 - AVERAGE CNMI HOTEL DAILY RATE .....</b>	<b>7</b>
<b>TABLE 6 - AVERAGE CNMI HOTEL OCCUPANCY RATE .....</b>	<b>7</b>
<b>FIGURE 6 - AVERAGE CNMI HOTEL OCCUPANCY RATE .....</b>	<b>7</b>
<b>TABLE 7 - BUSINESS GROSS REVENUE (BGR) REPORTED .....</b>	<b>8</b>
<b>FIGURE 7 - BUSINESS GROSS REVENUE (BGR) REPORTED .....</b>	<b>8</b>
<b>TABLE 8 - GOVERNMENT EXPENDITURES .....</b>	<b>8</b>
<b>FIGURE 8 - GOVERNMENT EXPENDITURES .....</b>	<b>8</b>
<b>TABLE 9 - GENERAL FUND REVENUE (TAXES AND FEES COLLECTED) .....</b>	<b>9</b>
<b>FIGURE 9 - GENERAL FUND REVENUE (TAXES AND FEES COLLECTED) .....</b>	<b>9</b>
<b>TABLE 10 - IMPORTS .....</b>	<b>10</b>
<b>FIGURE 10 - IMPORTS (IN THOUSANDS) .....</b>	<b>10</b>
<b>TABLE 11 - EXPORTS .....</b>	<b>11</b>
<b>FIGURE 11 - EXPORTS (IN MILLIONS) .....</b>	<b>11</b>
<b>TABLE 12 - TELEPHONE LINES .....</b>	<b>11</b>
<b>FIGURE 12.1 - COMMERCIAL PHONE LINES BY ISLAND .....</b>	<b>12</b>
<b>FIGURE 12.2 - RESIDENTIAL PHONE LINES BY ISLAND .....</b>	<b>12</b>
<b>FIGURE 12.3 - COMMERCIAL &amp; RESIDENTIAL PHONE LINES (TOTALS) .....</b>	<b>12</b>
<b>TABLE 13 - BUILDING PERMITS .....</b>	<b>13</b>
<b>FIGURE 13.1 - NUMBER OF BUILDING PERMITS ISSUED .....</b>	<b>13</b>
<b>FIGURE 13.2 - VALUES OF BUILDING PERMITS ISSUED (IN MILLIONS) .....</b>	<b>13</b>
<b>TABLE 14 - CNMI CONSUMER PRICE INDEX (CPI) .....</b>	<b>14</b>
<b>TABLE 15 - CNMI CONSUMER PRICE FOR 9 SELECTED GROUPS .....</b>	<b>14</b>
<b>TABLE 16 - HISTORICAL CPIs FOR SELECTED GROUPS .....</b>	<b>15</b>
<b>LIST OF CONTRIBUTORS .....</b>	<b>16</b>

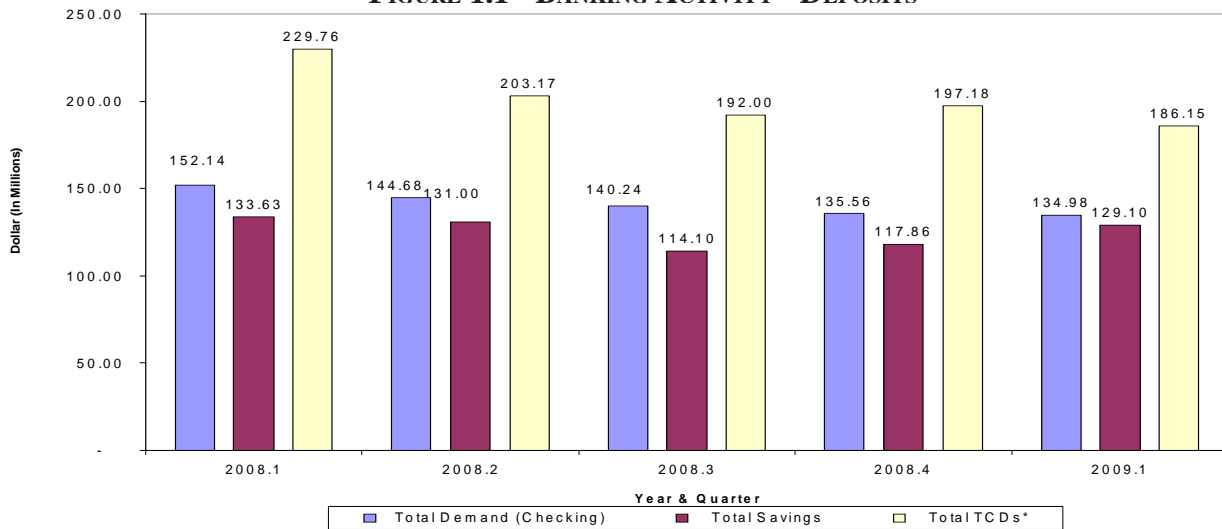
# TABLE 1 - BANKING ACTIVITY

Banking Activity (US \$ Millions)	Year				Quarter				
	2005	2006	2007	2008	2008.1	2008.2	2008.3	2008.4	2009.1
<b>Total Deposits</b>	<b>523.70</b>	<b>517.90</b>	<b>531.20</b>	<b>450.60</b>	<b>515.53</b>	<b>478.85</b>	<b>446.34</b>	<b>450.60</b>	<b>450.23</b>
Total Demand (Checking)	178.60	143.10	156.85	135.56	152.14	144.68	140.24	135.56	134.98
Total Savings	175.40	159.70	143.25	117.86	133.63	131.00	114.10	117.86	129.10
Total TCDs*	169.70	215.10	231.10	197.18	229.76	203.17	192.00	197.18	186.15
<b>Total Loans</b>	<b>193.80</b>	<b>180.80</b>	<b>161.61</b>	<b>141.25</b>	<b>156.72</b>	<b>149.14</b>	<b>144.65</b>	<b>141.25</b>	<b>136.42</b>
Consumer	81.50	74.10	65.30	56.06	62.34	60.07	58.16	56.06	53.77
Real Estate	47.30	45.90	42.33	39.55	41.75	40.99	40.62	39.55	38.58
Commercial	65.00	60.80	53.97	45.64	52.64	48.08	45.88	45.64	44.06
<b>Loan to Deposit Ratio</b>	<b>37.0%</b>	<b>34.9%</b>	<b>30.4%</b>	<b>31.3%</b>	<b>30.4%</b>	<b>31.1%</b>	<b>32.4%</b>	<b>31.3%</b>	<b>30.3%</b>

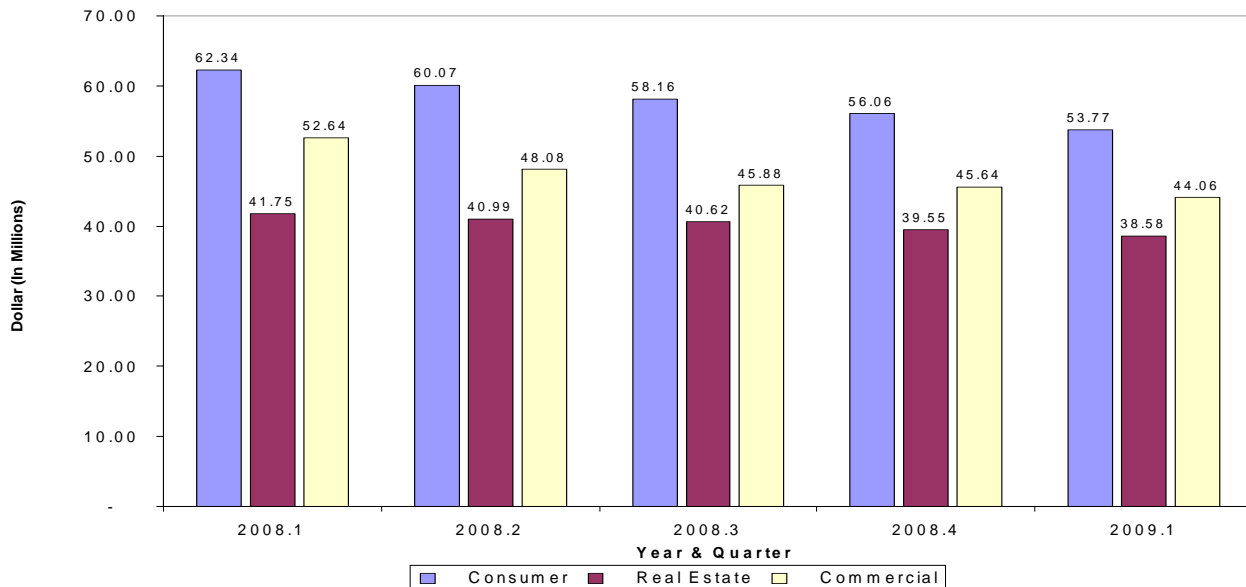
Source: Banking Section, Department of Commerce

\*Includes Cashiers Checks

### FIGURE 1.1 - BANKING ACTIVITY - DEPOSITS



### FIGURE 1.2 - BANKING ACTIVITY - LOANS

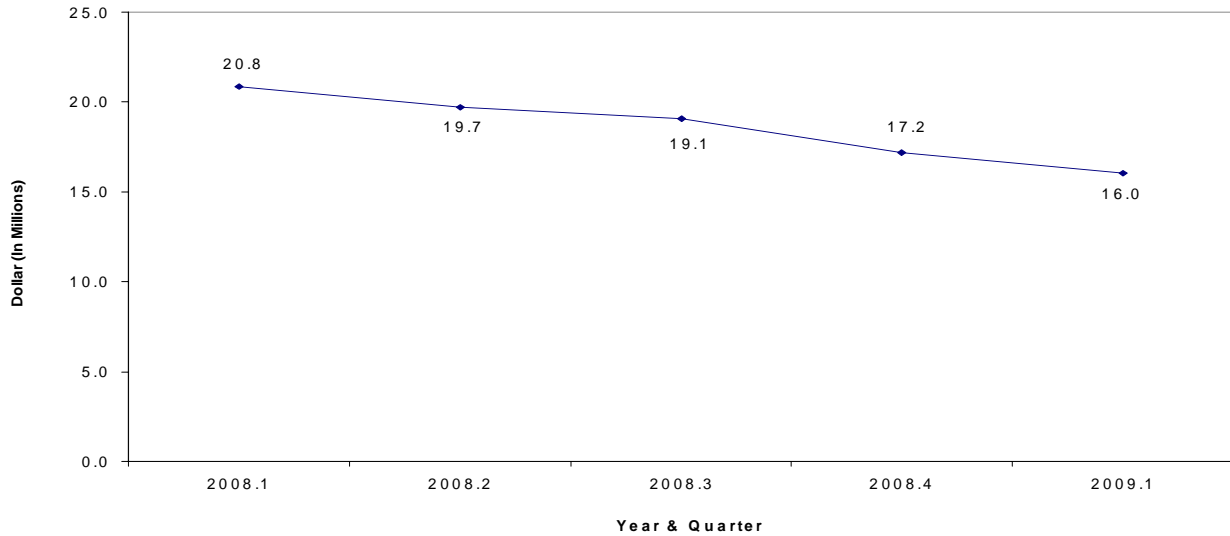


## TABLE 2 - REMITTANCE

Remittances	Year				Quarter				
	2005	2006	2007	2008	2008.1	2008.2	2008.3	2008.4	2009.1
Remittances (US \$ Millions)	112.6	102.2	93.6	76.8	20.8	19.7	19.1	17.2	16.0
% Change to Previous Year/Quarter	19.0%	-9.2%	-8.4%	-18.0%	-18.1%	-10.3%	-13.0%	-29.3%	-23.0%
% Change to Previous Quarter					-14.2%	-5.4%	-3.3%	-9.9%	-6.5%

Source: Banking Section, Department of Commerce

## FIGURE 2 - REMITTANCE

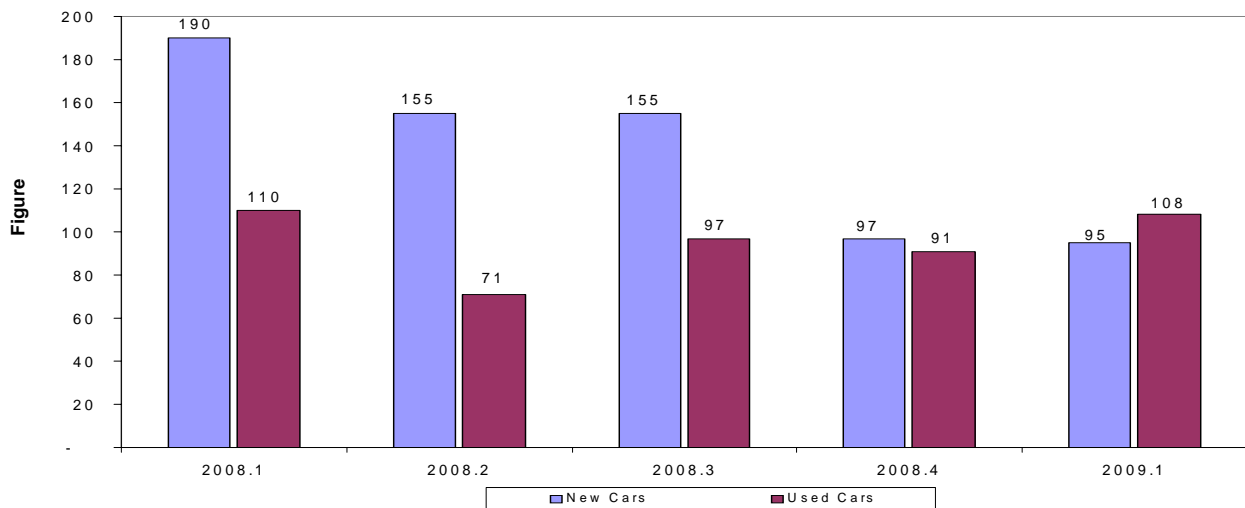


## TABLE 3 - AUTO SALES

Auto Sales	Year				Quarter				
	2005	2006	2007	2008	2008.1	2008.2	2008.3	2008.4	2009.1
Total Cars Sold	1,885	1,352	1,101	966	300	226	252	188	203
% Change to Previous Year/Quarter	-5.4%	-28.2%	-18.6%	-12.3%	9.1%	-13.4%	-12.5%	-32.1%	-32.3%
% Change to Previous Quarter					8.3%	-24.7%	11.5%	-25.4%	8.0%
New Cars	1,555	1,000	632	597	190	155	155	97	95
Used Cars	330	352	469	369	110	71	97	91	108

Source: Commonwealth Auto Dealer's Association (CADA)

## FIGURE 3 - AUTO SALES



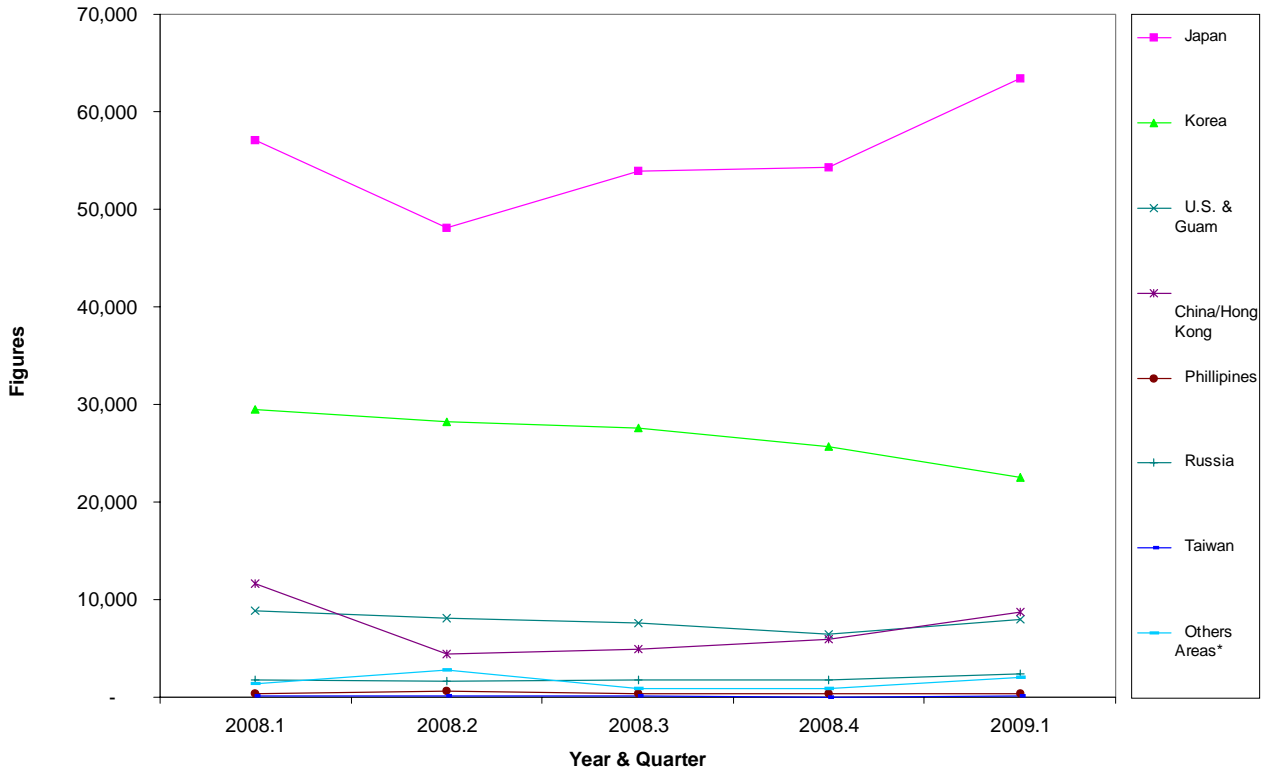
# TABLE 4 - VISITOR ARRIVAL

Visitor Arrivals	Year				Quarter				
	2005	2006	2007	2008	2008.1	2008.2	2008.3	2008.4	2009.1
<b>Total Visitors</b>	<b>491,701</b>	<b>435,494</b>	<b>389,261</b>	<b>396,410</b>	<b>110,690</b>	<b>93,939</b>	<b>97,160</b>	<b>95,482</b>	<b>107,434</b>
% Change to Previous Year/Quarter	-16.55%	-11.43%	-10.62%	1.84%	1.0%	10.0%	-2.5%	0.9%	-2.9%
% Change to Previous Quarter					17.0%	-15.1%	3.4%	-1.7%	12.5%
<b>Japan</b>	351,739	269,780	200,109	201,982	57,099	48,080	53,871	54,249	63,429
<b>Korea</b>	69,952	82,891	108,321	116,710	29,512	28,284	27,595	25,725	22,513
<b>U.S. &amp; Guam</b>	37,666	24,579	27,849	32,199	8,800	8,159	7,634	6,471	7,945
<b>China/Hongkong</b>	23,410	38,313	40,331	31,095	11,667	4,391	4,885	5,935	8,747
<b>Philippines</b>	2,381	4,320	5,025	1,960	370	610	420	380	322
<b>Russia</b>		1,675	3,671	6,177	1,748	1,588	1,747	1,731	2,352
<b>Taiwan</b>	2,085	314	445	278	87	72	66	59	106
<b>Others Areas*</b>	4,468	6,178	3,510	6,009	1,407	2,755	942	932	2,020

Source: Marianas Visitors Authority (MVA)

\*Note: 2005 includes China/Hong Kong, Philippines, Russia, & Taiwan

## FIGURE 4 - VISITOR ARRIVAL



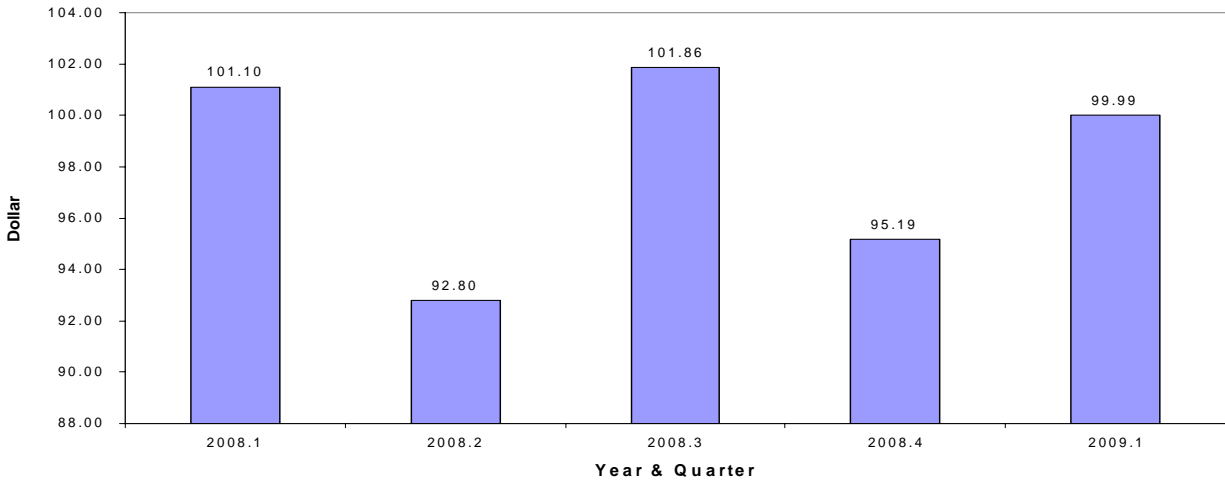
## TABLE 5 - AVERAGE CNMI HOTEL DAILY RATE

Hotel Daily Rates	Year				Quarter				
	2005	2006	2007	2008	2008.1	2008.2	2008.3	2008.4	2009.1
Average Daily Rates (\$)	83.00	90.00	92.12	97.74	101.10	92.80	101.86	95.19	99.99
% Change to Previous Year/Quarter	3.8%	8.4%	2.4%	6.1%	5.5%	8.3%	4.7%	6.2%	-1.1%
% Change to Previous Quarter					12.8%	-8.2%	9.8%	-6.5%	5.0%

Source: Hotel Association of the Northern Mariana Islands (HANMI). Data from HANMI members only.

Note: All Percents are Rounded to the Nearest Tenth

### FIGURE 5 - AVERAGE CNMI HOTEL DAILY RATE



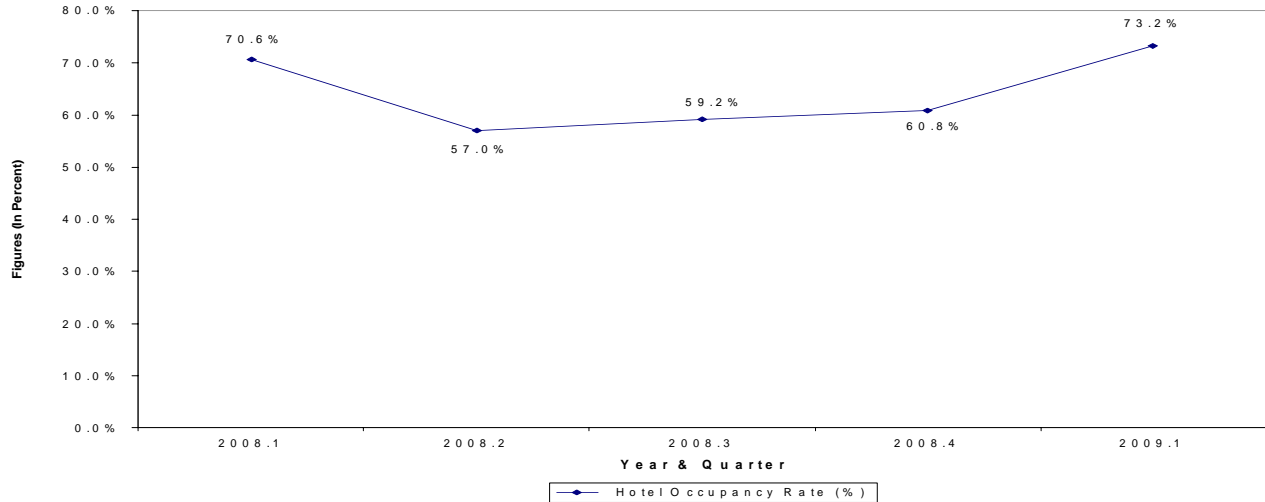
## TABLE 6 - AVERAGE CNMI HOTEL OCCUPANCY RATE

Hotel Occupancy Rate	Year				Quarter				
	2005	2006	2007	2008	2008.1	2008.2	2008.3	2008.4	2009.1
Hotel Occupancy Rate (%)	70.0%	62.0%	58.9%	61.9%	70.6%	57.0%	59.2%	60.8%	73.2%
% Change to Previous Year/Quarter	-3%	-11%	-5%	5%	1.2%	8.8%	3.4%	8.3%	3.7%
% Change to Previous Quarter					25.9%	-19.3%	3.8%	2.7%	20.5%

Source: Hotel Association of the Northern Mariana Islands (HANMI). Data from HANMI members only.

Note: All Percents are Rounded to the Nearest Tenth

### FIGURE 6 - AVERAGE CNMI HOTEL OCCUPANCY RATE



## TABLE 7 - BUSINESS GROSS REVENUE (BGR) REPORTED

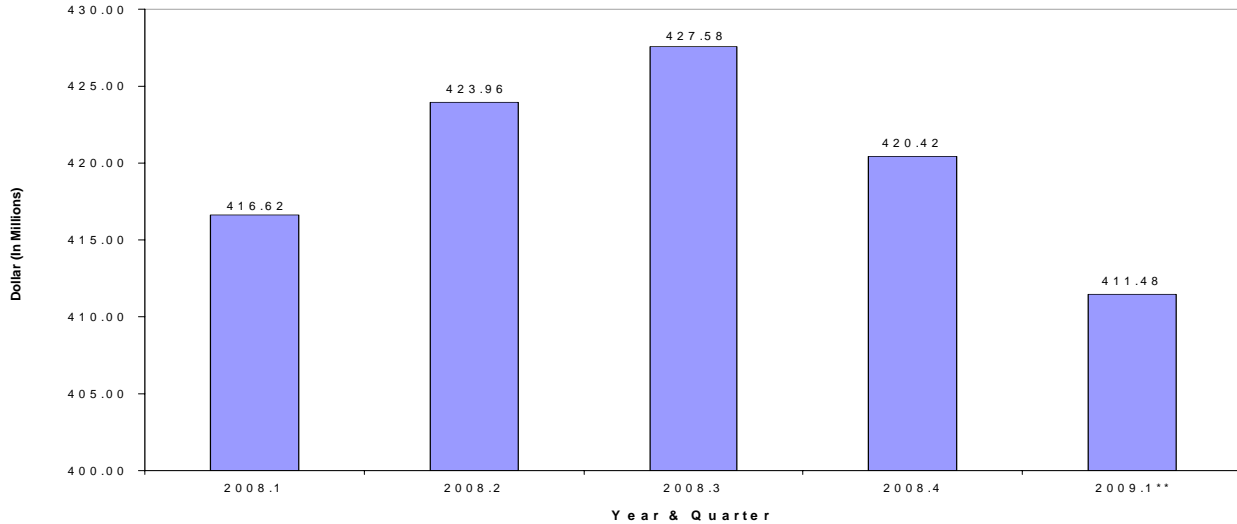
Business Gross Revenue (BGR)	Year				Quarter				
	2005	2006	2007	2008	2008.1	2008.2	2008.3	2008.4	2009.1**
<b>BGR Reported* (US \$ Millions)</b>	<b>2,020</b>	<b>1,829</b>	<b>1,672</b>	<b>1,689</b>	<b>416.62</b>	<b>423.96</b>	<b>427.58</b>	<b>420.42</b>	<b>411.48</b>
% Change to Previous Year/Quarter	-0.7%	-9.5%	-8.6%	1.0%	-8.3%	-0.2%	8.8%	5.2%	-1.2%
% Change to Previous Quarter					4.3%	1.8%	0.9%	-1.7%	-2.1%

Source: Department of Finance

\*Estimated based on BGRT and other income tax collections.

\*\*2009.1 revenues include estimated March excise tax revenues based on previous 5 month average

### FIGURE 7 - BUSINESS GROSS REVENUE (BGR) REPORTED



## TABLE 8 - GOVERNMENT EXPENDITURES

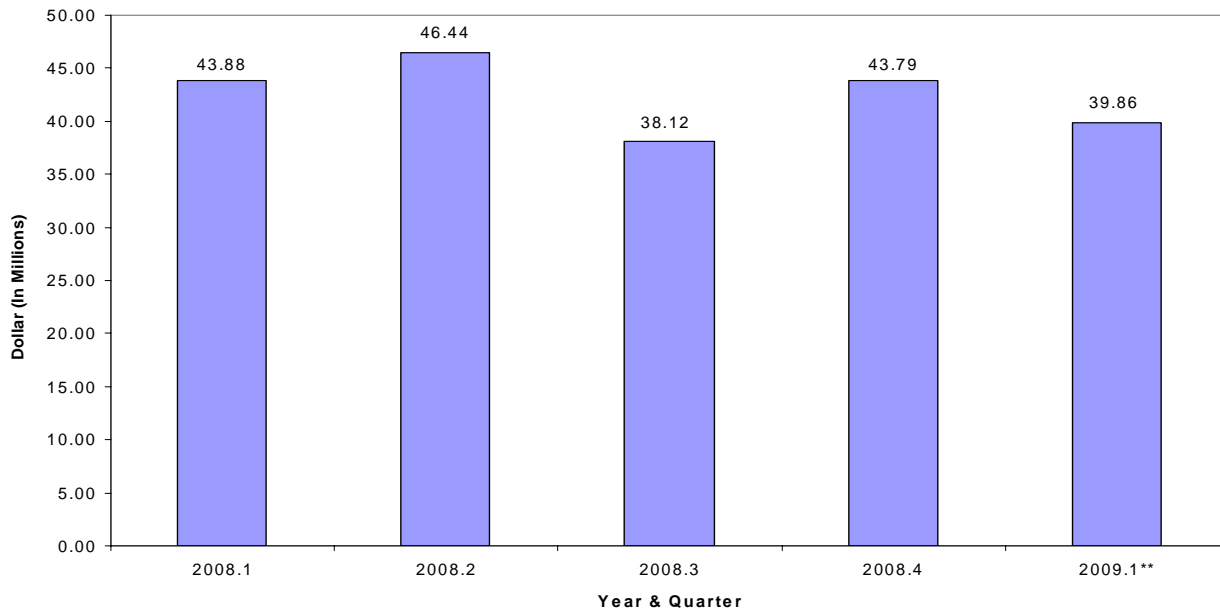
General Expenditures	Year				Quarter				
	2005	2006	2007	2008	2008.1	2008.2	2008.3	2008.4	2009.1**
<b>Government Expenditures (US \$ Millions)*</b>	<b>224.10</b>	<b>195.60</b>	<b>162.67</b>	<b>172.24</b>	<b>43.88</b>	<b>46.44</b>	<b>38.12</b>	<b>43.79</b>	<b>39.86</b>
% Change to Previous Year/Quarter	4.04%	-12.72%	-16.83%	5.88%	3.8%	22.1%	-5.2%	3.9%	-9.2%
% Change to Previous Quarter					4.1%	5.8%	-17.9%	14.9%	-9.0%

Source: Department of Finance

\*Note: FY07 - 08 expenditures do not include suspended employer retirement contributions

\*\*2009.1 revenues include estimated March excise tax revenues based on previous 5 month average

### FIGURE 8 - GOVERNMENT EXPENDITURES





# TABLE 9 - GENERAL FUND REVENUE (TAXES AND FEES COLLECTED)

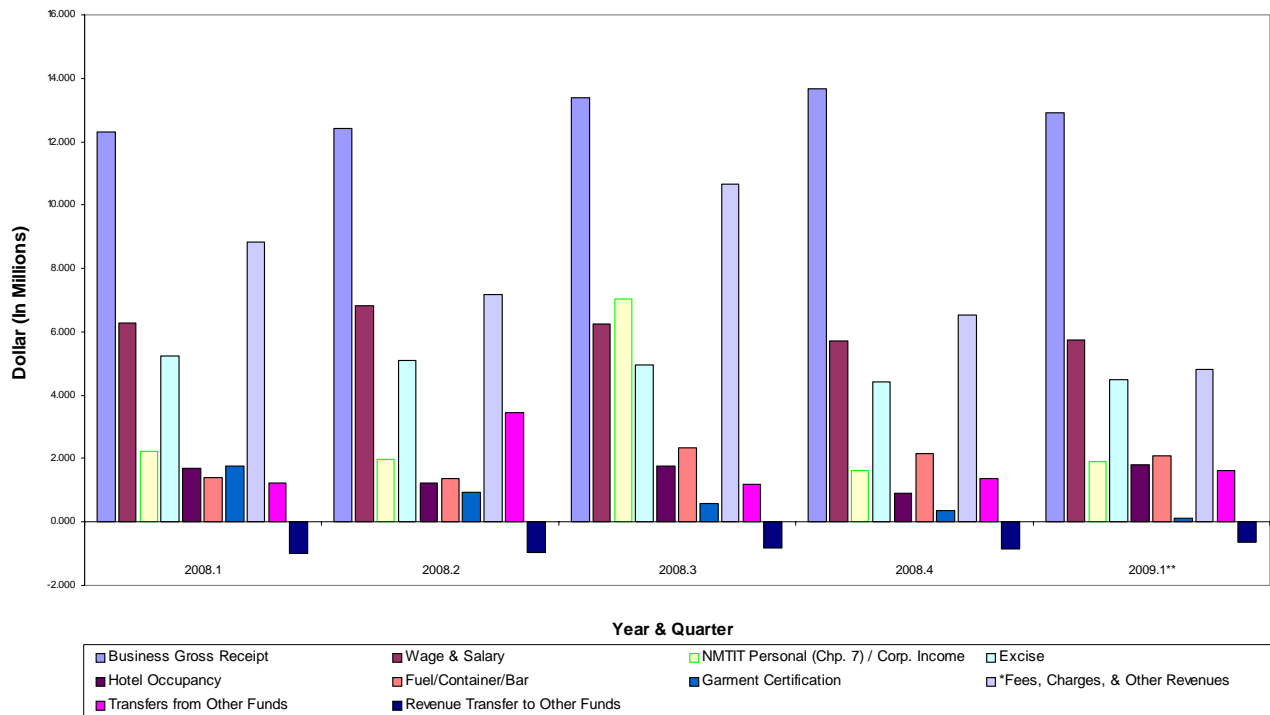
General Fund Revenue (Taxes and Fees Collected)	Year				Quarter				
	2005	2006	2007	2008	2008.1	2008.2	2008.3	2008.4	2009.1**
<b>Total (US \$ Millions)</b>	<b>210.29</b>	<b>192.03</b>	<b>163.03</b>	<b>162.76</b>	<b>40.016</b>	<b>39.495</b>	<b>47.370</b>	<b>35.877</b>	<b>34.847</b>
% Change to Previous Year/Quarter	-3.49%	-8.68%	-15.10%	-0.17%	-8.8%	-0.1%	7.1%	1.4%	-12.9%
% Change to Previous Quarter					13.1%	-1.3%	19.9%	-24.3%	-2.9%
Business Gross Receipt	58.29	54.05	49.04	51.78	12.309	12.405	13.387	13.682	12.921
Wage & Salary	32.68	28.58	26.20	25.05	6.288	6.808	6.245	5.707	5.733
NMTIT Personal (Chp. 7) / Corp. Income	10.01	15.05	8.34	12.90	2.234	1.985	7.047	1.632	1.920
Excise	23.88	24.41	20.58	19.72	5.253	5.082	4.973	4.407	4.485
Hotel Occupancy	6.50	5.54	4.93	5.56	1.676	1.221	1.773	0.890	1.783
Fuel/Container/Bar	10.24	7.25	6.82	7.28	1.422	1.372	2.337	2.152	2.087
Garment Certification	24.08	18.06	11.38	3.63	1.759	0.934	0.581	0.360	0.116
*Fees, Charges, & Other Revenues	44.61	33.81	39.26	33.17	8.830	7.180	10.643	6.518	4.809
Transfers from Other Funds				7.29	1.242	3.461	1.200	1.382	1.619
Revenue Transfer to Other Funds			-3.51	-3.62	-0.997	-0.953	-0.816	-0.853	-0.626

Source: Department of Finance

\*Note: Also Includes "Transfers From Other Funds" for Years 2005 - 2007

\*\*2009.1 revenues include estimated March excise tax revenues based on previous 5 month average

## FIGURE 9 - GENERAL FUND REVENUE (TAXES AND FEES COLLECTED)



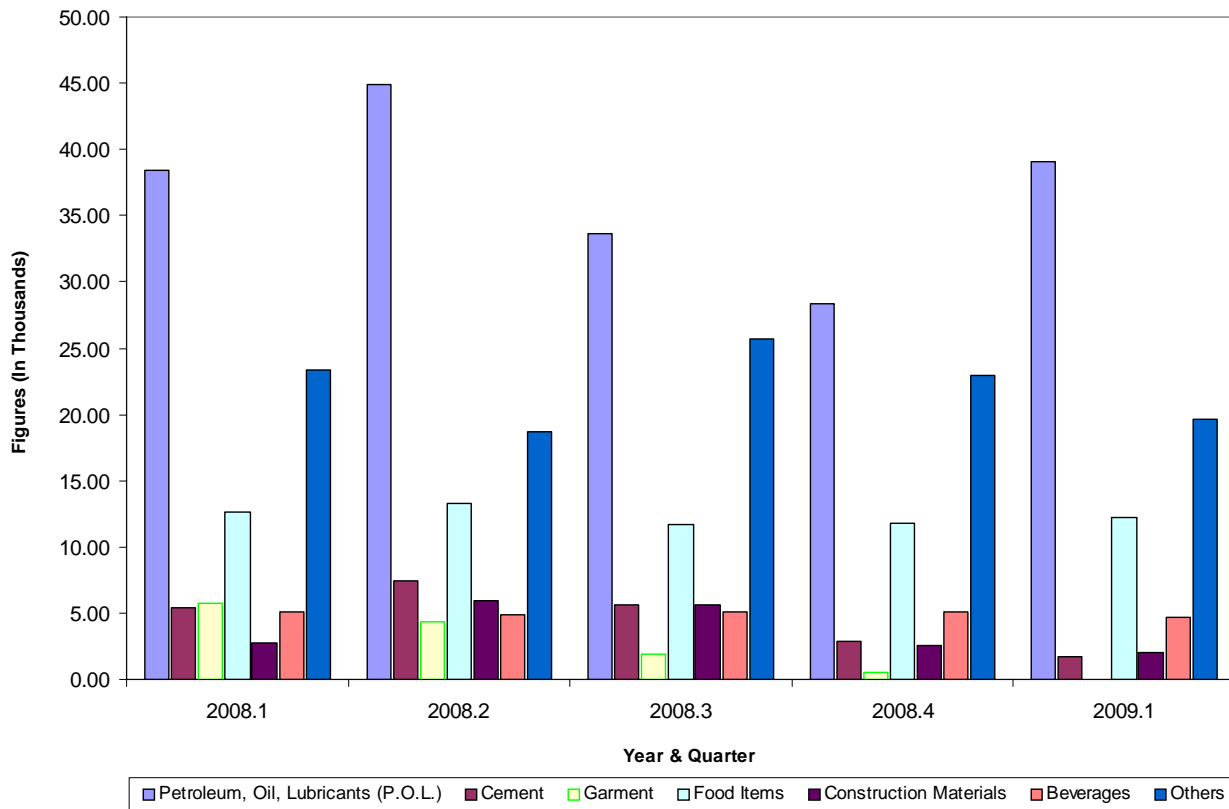
# TABLE 10 - IMPORTS

Imports	Year				Quarter				
	2005*	2006	2007	2008	2008.1	2008.2	2008.3	2008.4	2009.1
<b>Total Tonnage (In Thousands)</b>	<b>605.50</b>	<b>540.20</b>	<b>439.44</b>	<b>356.35</b>	<b>93.46</b>	<b>99.47</b>	<b>89.27</b>	<b>74.15</b>	<b>79.34</b>
Petroleum, Oil, Lubricants (P.O.L.)	214.20	203.40	175.99	145.30	38.45	44.90	33.66	28.30	39.09
Cement	19.20	16.80	27.15	21.31	5.37	7.44	5.67	2.83	1.67
Garment	112.90	91.50	51.64	12.48	5.69	4.36	1.89	0.54	0.02
Food Items		62.30	53.53	49.37	12.68	13.23	11.64	11.81	12.20
Construction Materials		16.60	14.90	16.86	2.80	5.94	5.58	2.54	2.05
Beverages		23.50	20.66	20.30	5.11	4.90	5.15	5.15	4.65
Others	259.20	125.90	95.57	90.74	23.36	18.70	25.70	22.98	19.65

Source: Port of Saipan, Commonwealth Ports Authority (CPA)

\*Note: Others include Food, Construction Materials & Beverages for 2005

## FIGURE 10 - IMPORTS (IN THOUSANDS)



## TABLE 11 - EXPORTS

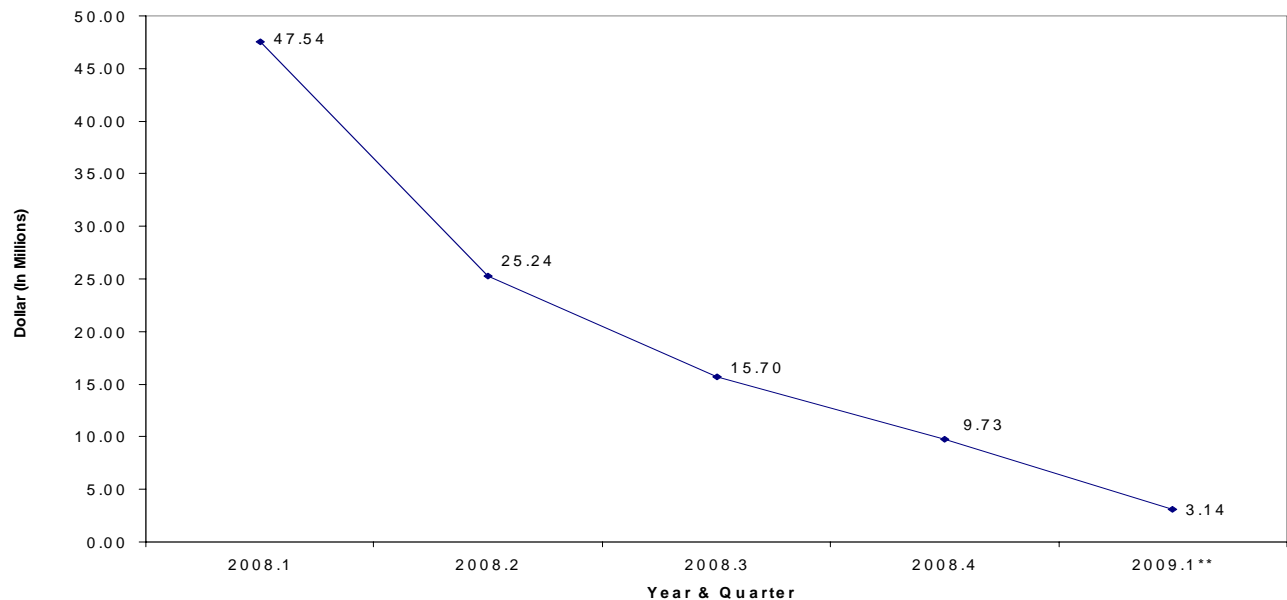
Exports	Year				Quarter				
	2005	2006	2007	2008	2008.1	2008.2	2008.3	2008.4	2009.1**
Garment Exports Value (US \$ Millions)*	650.80	486.50	307.57	98.22	47.54	25.24	15.70	9.73	3.14
% Change to Previous Year/Quarter	-21.21%	-25.25%	-36.78%	-68.07%	-53.34%	-67.11%	-78.07%	-83.02%	-93.41%
% Change to Previous Quarter					-17.03%	-46.90%	-37.79%	-38.04%	-67.78%

Source: Department of Finance

\*Note: Estimated Based on Garment Certification Fee Collection

\*\*2009.1 revenues include estimated March excise tax revenues based on previous 5 month average

### FIGURE 11 - EXPORTS (IN MILLIONS)

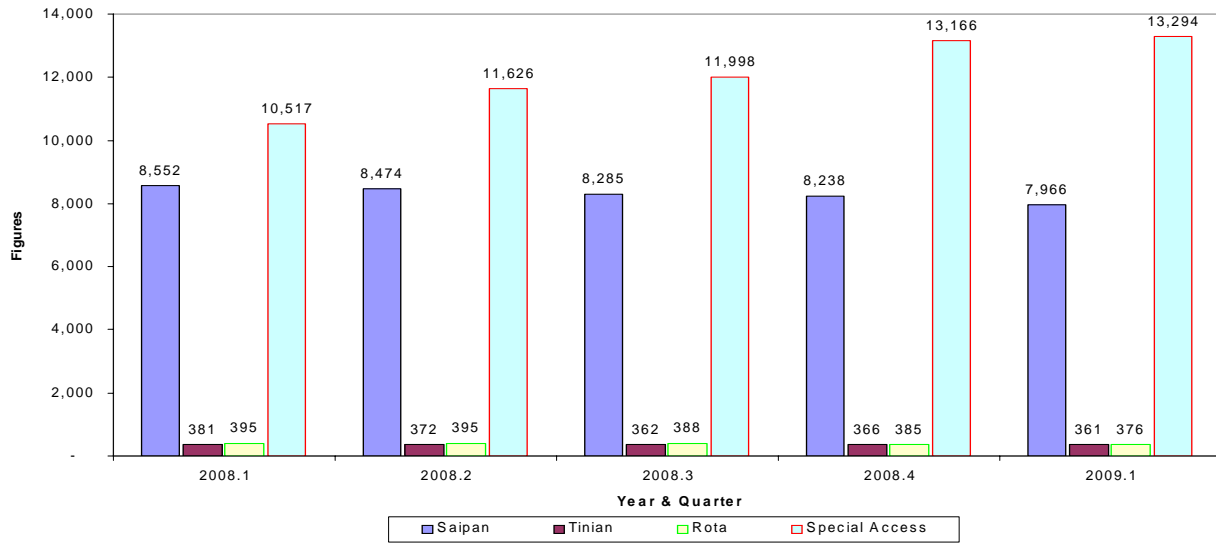


## TABLE 12 - TELEPHONE LINES

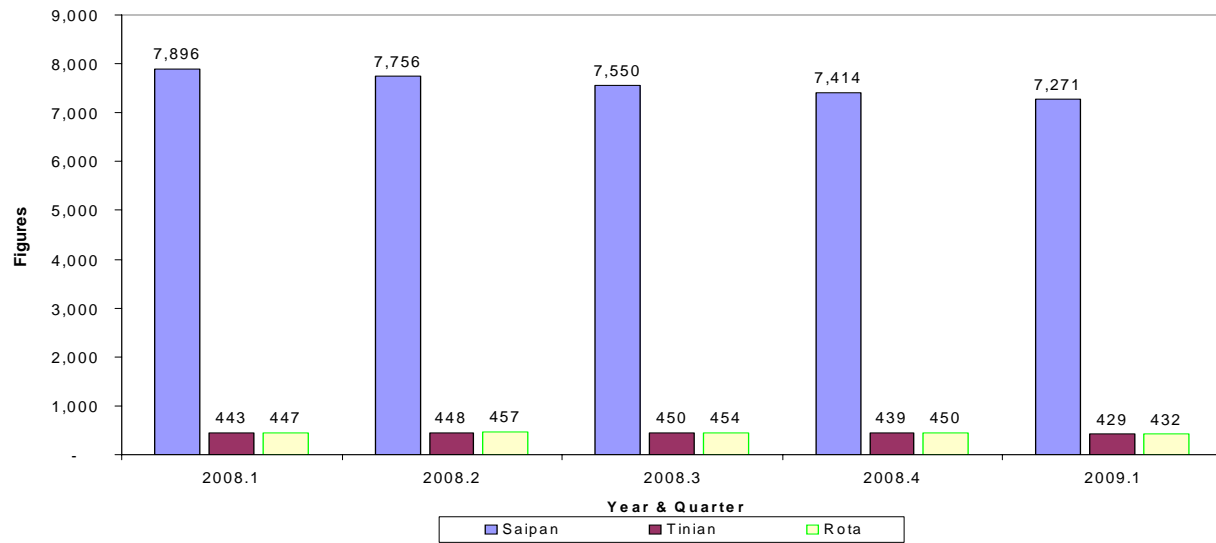
Telephone Lines	Year				Quarter				
	2005	2006	2007	2008	2008.1	2008.2	2008.3	2008.4	2009.1
<b>Total Telephone Lines</b>	<b>31,752</b>	<b>30,684</b>	<b>28,963</b>	<b>30,458</b>	<b>28,631</b>	<b>29,528</b>	<b>29,487</b>	<b>30,458</b>	<b>30,129</b>
% Change to Previous Year/Quarter	0.7%	-3.4%	-5.6%	5.2%	-4.4%	-0.5%	1.1%	5.2%	5.2%
% Change to Previous Quarter					-1.1%	3.1%	-0.1%	3.3%	-1.1%
<b>Total Commercial Phone Lines</b>	<b>20,551</b>	<b>20,592</b>	<b>20,001</b>	<b>22,155</b>	<b>19,845</b>	<b>20,867</b>	<b>21,033</b>	<b>22,155</b>	<b>21,997</b>
% Change to Previous Year/Quarter	4.2%	0.20%	-2.9%	10.8%	-1.3%	3.6%	5.2%	10.8%	10.8%
% Change to Previous Quarter					-0.8%	5.1%	0.8%	5.3%	-0.7%
Saipan	10,668	9,737	8,689	8,238	8,552	8,474	8,285	8,238	7,966
Tinian	435	387	376	366	381	372	362	366	361
Rota	466	428	410	385	395	395	388	385	376
Special Access	8,982	10,040	10,526	13,166	10,517	11,626	11,998	13,166	13,294
<b>Total Residential Phone Lines</b>	<b>11,201</b>	<b>10,092</b>	<b>8,962</b>	<b>8,303</b>	<b>8,786</b>	<b>8,661</b>	<b>8,454</b>	<b>8,303</b>	<b>8,132</b>
% Change to Previous Year/Quarter	-5.1%	-9.90%	-11.2%	-7.4%	-10.6%	-9.3%	-7.9%	-7.4%	-7.4%
% Change to Previous Quarter					-2.0%	-1.4%	-2.4%	-1.8%	-2.1%
Saipan	10,178	9,096	8,045	7,414	7,896	7,756	7,550	7,414	7,271
Tinian	499	492	458	439	443	448	450	439	429
Rota	524	504	459	450	447	457	454	450	432

Source: Island Telecom & Engineering (IT&E)

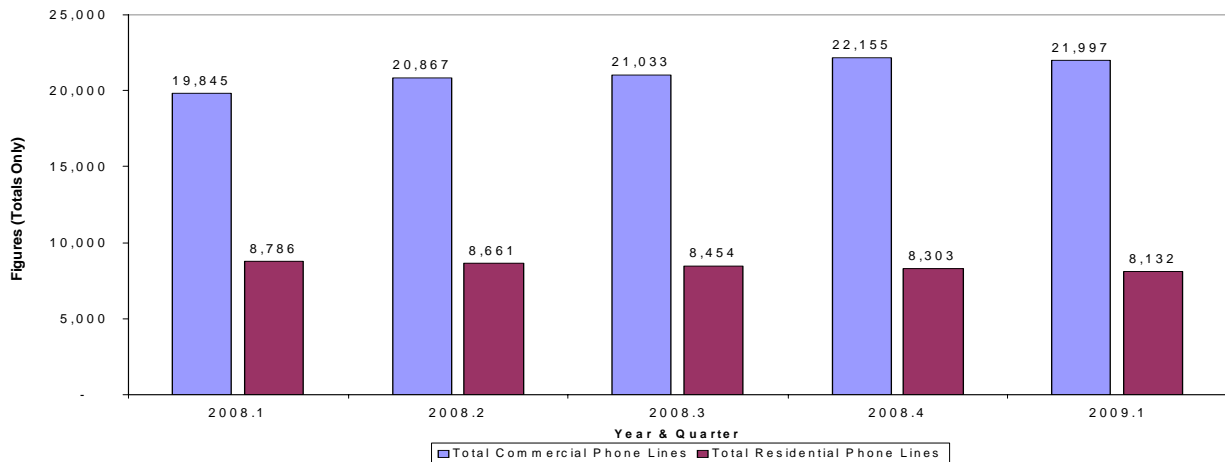
**FIGURE 12.1 - COMMERCIAL PHONE LINES BY ISLAND**



**FIGURE 12.2 - RESIDENTIAL PHONE LINES BY ISLAND**



**FIGURE 12.3 - COMMERCIAL & RESIDENTIAL PHONE LINES (TOTALS)**



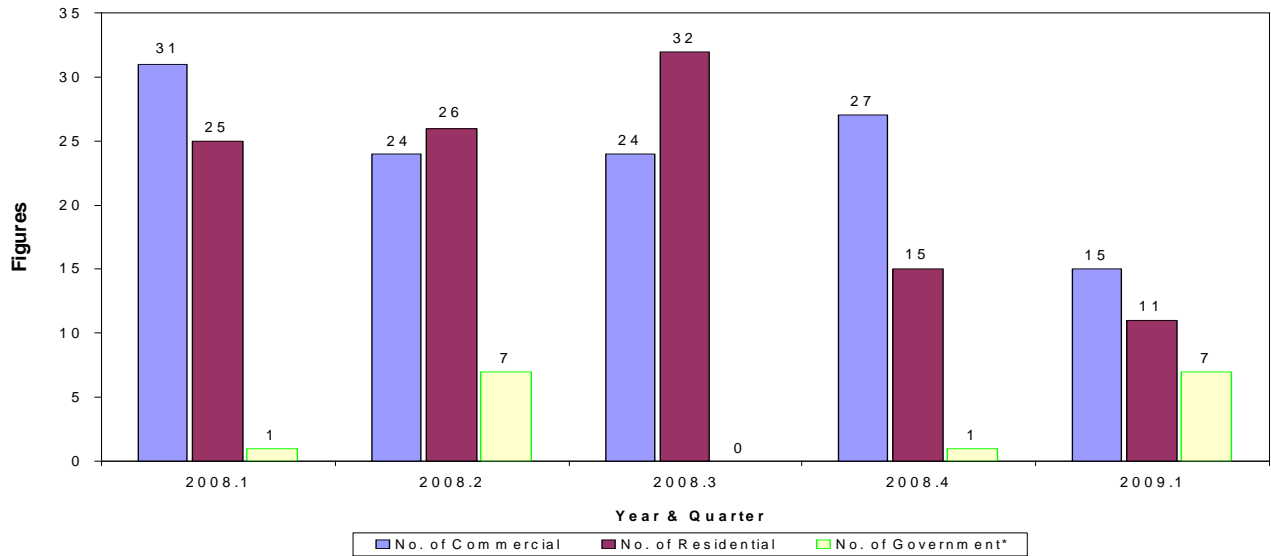
# TABLE 13 - BUILDING PERMITS

CNMI Building Permits Issued	Year				Quarter				
	2005	2006	2007	2008	2008.1	2008.2	2008.3	2008.4	2009.1
<b>Total No. of Permits</b>	<b>350</b>	<b>292</b>	<b>255</b>	<b>213</b>	<b>57</b>	<b>57</b>	<b>56</b>	<b>43</b>	<b>33</b>
No. of Commercial	164	125	121	106	31	24	24	27	15
No. of Residential	186	167	120	98	25	26	32	15	11
No. of Government*			14	9	1	7	0	1	7
<b>Total Value (US \$ Millions)</b>	<b>28.89</b>	<b>11.79</b>	<b>16.23</b>	<b>43.99</b>	<b>4.94</b>	<b>12.26</b>	<b>14.76</b>	<b>12.03</b>	<b>2.33</b>
Commercial	19.94	3.59	8.96	36.40	3.06	9.33	12.76	11.25	0.74
Residential	8.95	7.74	5.06	5.12	1.59	0.75	2.00	0.77	1.00
Government*			2.21	2.47	0.30	2.18	0.00	0.00	0.59

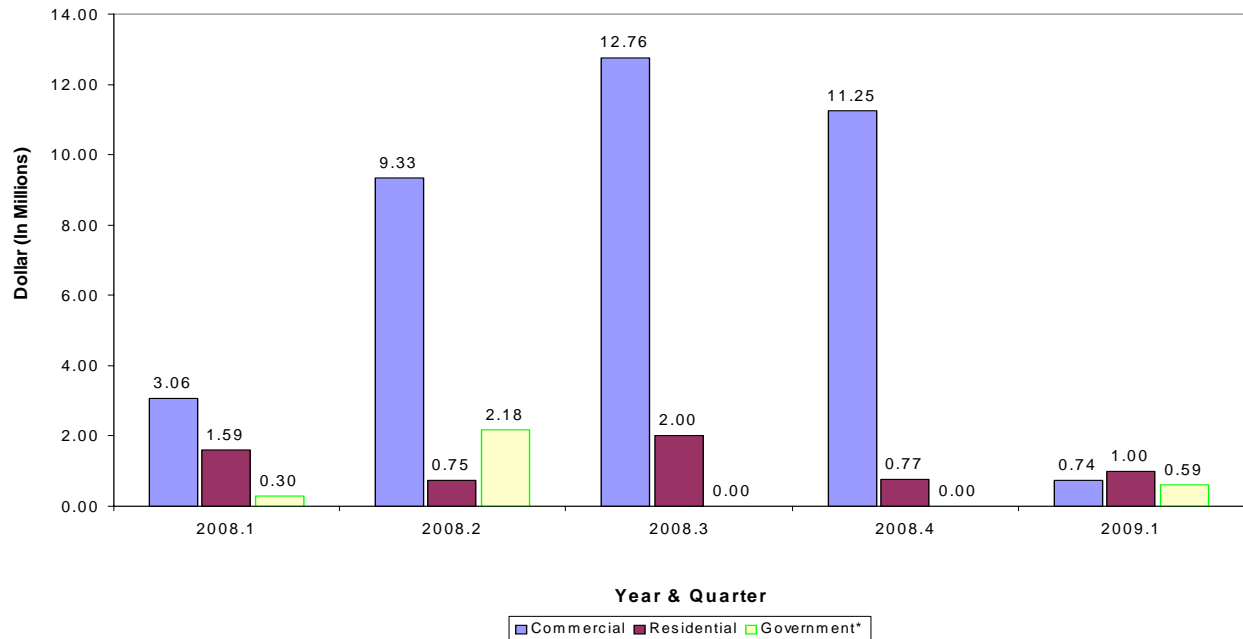
Source: Building Safety Code Division, Department of Public Works

\*Recent Addition to 2007

## FIGURE 13.1 - NUMBER OF BUILDING PERMITS ISSUED



## FIGURE 13.2 - VALUES OF BUILDING PERMITS ISSUED (IN MILLIONS)



## TABLE 14 - CNMI CONSUMER PRICE INDEX (CPI)

COMMONWEALTH OF THE NORTHERN MARIANA ISLANDS  
4th Quarter 2008 = 100

Groups	1st Qtr 2009	4th Qtr 2008	1st Qtr 2008	To 1st Qtr09 fm 4th Qtr08	To 1st Qtr fm 1st Qtr 08
All Items	100.2	100.0	94.7	0.2	5.8
Food	100.6	100.0	94.3	0.6	6.7
Alcoholic Beverages	106.5	100.0	102.0	6.5	4.4
Housing and Utilities	99.8	100.0	92.3	-0.2	8.1
Apparel	99.8	100.0	101.0	-0.2	-1.2
Transportation	100.5	100.0	95.7	0.5	5.0
Medical Care	102.8	100.0	99.8	2.8	3.0
Recreation	100.2	100.0	104.4	0.2	-4.0
Education and Communication	96.4	100.0	99.2	-3.6	-2.9
Other Goods and Services	101.7	100.0	92.9	1.7	9.5

Source: Department of Commerce, Central Statistics Division

## TABLE 15 - CNMI CONSUMER PRICE FOR 9 SELECTED GROUPS

COMMONWEALTH OF THE NORTHERN MARIANA ISLANDS  
4th Quarter 2008 = 100

Year & Quarter	All Items	Food	Alcoholic Beverages	Housing Utilities	Apparel	Transportation	Medical Care	Recreation	Education and Communication	Other Goods & Services
2003.1	100.0	100.0	100.0	100.0	100.0	100.0	100.0	100.0	100.0	100.0
2003.2	99.9	100.3	100.2	100.0	100.2	99.7	100.0	99.3	99.8	100.0
2003.3	99.8	100.7	100.0	99.2	101.0	99.7	100.0	99.1	100.2	100.0
2003.4	99.6	100.5	99.9	97.9	100.5	100.5	100.0	96.3	99.6	100.0
2004.1	100.2	103.1	99.9	98.3	100.9	100.5	100.0	95.6	99.5	100.0
2004.2	100.9	104.1	99.7	97.7	99.8	100.9	100.0	101.5	99.6	108.3
2004.3	100.5	105.2	100.1	97.4	95.5	100.0	100.0	98.9	98.7	108.3
2004.4	101.2	107.4	99.9	98.0	92.6	100.2	100.0	98.6	100.9	108.3
2005.1	101.3	106.9	100.0	98.2	98.0	100.6	100.0	98.8	98.0	108.3
2005.2	101.6	107.7	101.3	98.3	96.6	100.7	100.0	101.5	98.4	108.3
2005.3	100.2	100.4	100.4	100.1	96.3	100.3	100.1	99.6	101.4	100.0
2005.4	100.6	99.6	100.1	102.2	99.5	100.0	99.8	100.8	101.1	100.0
2006.1	101.3	101.0	100.4	101.5	114.0	100.3	106.5	103.0	100.8	100.0
2006.2	100.3	100.2	100.0	101.0	100.5	100.0	100.0	100.7	100.0	100.0
2006.3	111.3	101.3	100.0	139.7	100.5	100.0	100.0	102.2	100.1	100.0
2006.4	111.7	102.3	100.0	140.5	100.3	100.0	100.0	99.1	100.5	100.0
2007.1	112.4	104.9	103.9	140.9	101.8	100.0	100.0	100.3	100.8	100.0
2007.2	113.7	106.2	103.9	144.5	102.1	100.0	101.1	100.4	100.6	100.0
2007.3	113.8	106.5	103.9	144.6	102.3	100.0	101.1	100.8	100.6	100.0
2007.4	114.1	107.4	104.3	144.9	102.3	100.0	101.1	101.0	100.6	100.0
2008.1	114.1	112.0	106.4	141.0	102.4	100.0	107.9	102.4	100.5	100.0
2008.2	120.9	112.4	107.2	161.6	101.3	103.2	107.9	99.8	100.5	100.0
2008.3	120.2	116.1	103.5	159.3	100.8	96.5	104.5	98.1	100.8	107.7
2008.4	100.0	100.0	100.0	100.0	100.0	100.0	100.0	100.0	100.0	100.0
2009.1	100.2	100.6	106.5	99.8	99.8	100.5	102.8	100.2	96.4	101.7

Source: Central Statistics Division, Department of Commerce

# TABLE 16 - HISTORICAL CPIs FOR SELECTED GROUPS

## COMMONWEALTH OF THE NORTHERN MARIANA ISLANDS

4th Quarter 2008 = 100

Year & Quarter	Food	Alcoholic Beverages	Housing Utilities	Apparel	Transportation	Medical Care	Recreation	Education Communication	Other Goods & Services	All Items
Wgts	19.02	1.72	27.73	2.24	33.52	2.36	2.44	5.68	5.30	100.0
2000.1	111.3		103.1	108.5	97.0	84.3				99.3
2000.2	110.1		103.5	107.4	99.1	92.5				101.8
2000.3	112.2		104.7	107.9	101.4	93.1				103.2
2000.4	109.0		100.7	108.0	101.4	92.6				101.4
2001.1	106.0		101.3	108.0	101.2	92.2				100.3
2001.2	107.3		101.2	107.5	100.6	92.2				100.6
2001.3	106.7		104.2	107.5	100.2	92.1				100.8
2001.4	107.7		102.3	108.4	98.8	91.9				100.7
2002.1	106.0		102.8	107.2	99.5	97.9				102.2
2002.2	103.7		98.4	107.9	101.0	97.6				100.8
2002.3	102.3		101.3	107.7	101.0	97.7				100.8
2002.4	99.6		100.3	101.5	101.2	97.7				99.4
2003.1	100.0	100.0	100.0	100.0	100.0	100.0	100.0	100.0	100.0	100.0
2003.2	100.3	100.2	100.0	100.2	99.7	100.0	99.3	99.8	100.0	99.9
2003.3	100.7	100.0	99.2	101.0	99.7	100.0	99.1	100.2	100.0	99.8
2003.4	100.5	99.9	97.9	100.5	100.5	100.0	96.3	99.6	100.0	99.6
2004.1	103.1	99.9	98.3	100.9	100.5	100.0	95.6	99.5	100.0	100.2
2004.2	104.1	99.7	97.7	99.8	100.9	100.0	101.5	99.6	108.3	100.9
2004.3	105.2	100.1	97.4	95.5	100.0	100.0	98.9	98.7	108.3	100.5
2004.4	107.4	99.9	98.0	92.6	100.2	100.0	98.6	100.9	108.3	101.2
2005.1	106.9	100.0	98.2	98.0	100.6	100.0	98.8	98.0	108.3	101.3
2005.2	107.7	101.3	98.3	96.6	100.7	100.0	101.5	98.4	108.3	101.6
2005.3	100.4	100.4	100.1	96.3	100.3	100.1	99.6	101.4	100.0	100.2
2005.4	99.6	100.1	102.2	99.5	100.0	99.8	100.8	101.1	100.0	100.6
2006.1	101.0	100.4	101.5	114.0	100.3	106.5	103.0	100.8	100.0	101.3
2006.2	100.2	100.0	101.0	100.5	100.0	100.0	100.7	100.0	100.0	100.3
2006.3	101.3	100.0	139.7	100.5	100.0	100.0	102.2	100.1	100.0	111.3
2006.4	102.3	100.0	140.5	100.3	100.0	100.0	99.1	100.5	100.0	111.7
2007.1	104.9	103.9	140.9	101.8	100.0	100.0	100.3	100.8	100.0	112.4
2007.2	106.2	103.9	144.5	102.1	100.0	101.1	100.4	100.6	100.0	113.7
Year & Quarter	Food	Alcoholic Beverages	Housing Utilities	Apparel	Transportation	Medical Care	Recreation	Education Communication	Other Goods & Services	All Items
Wgts	19.02	1.72	27.73	2.24	33.52	2.36	2.44	5.68	5.30	100.0
2007.3	106.5	103.9	144.6	102.3	100.0	101.1	100.8	100.6	100.0	113.8
2007.4	107.4	104.3	144.9	102.3	100.0	101.1	101.0	100.6	100.0	114.1
2008.1	112.0	106.4	141.0	102.4	100.0	107.9	102.4	100.5	100.0	114.1
2008.2	112.4	107.7	161.6	101.3	103.2	107.9	99.8	100.5	100.0	120.9
2008.3	116.1	103.5	159.3	100.8	96.5	104.5	98.1	100.8	107.7	120.2
2008.4	100.0	100.0	100.0	100.0	100.0	100.0	100.0	100.0	100.0	100.0
2009.1	100.6	106.5	99.8	99.8	100.5	102.8	100.2	96.4	101.7	100.2

1 The previous Consumer Price Index had only 5 major groups rather than the 9 that are in the revised CPI. Nevertheless, these historical CPIs will provide users with some indication of historical price movement of the CPI.

Source: Central Statistics Division, Department of Commerce

## LIST OF CONTRIBUTORS

<b>Agency</b>		<b>Contact Number</b>
Commonwealth Auto-Dealer Association	<b>CADA</b>	234-5911
Commonwealth Ports Authority	<b>CPA</b>	664-3555/3553
Department of Commerce	<b>DOC</b>	664-3044/3023
Department of Finance	<b>DOF</b>	664-1186
Department of Public Works	<b>DPW</b>	235-5827/9570
Hotel Association of Northern Mariana Islands	<b>HANMI</b>	233-3773/6964
Marianas Visitor Authority	<b>MVA</b>	664-3230
Island Telecom & Engineering	<b>IT&amp;E</b>	682-2612